

# Roboza CMS PRO Central Management Software



Roboza Central Management Software is a complimentary software to optimize features of Roboza IP-CCTV products, designed for medium and large-scale applications allowing multiple users access to the live & recorded videos remotely from anywhere in the world.

**roboza**  
PREMIUM CCTV



Easy operation



Device Management



Tour & Task



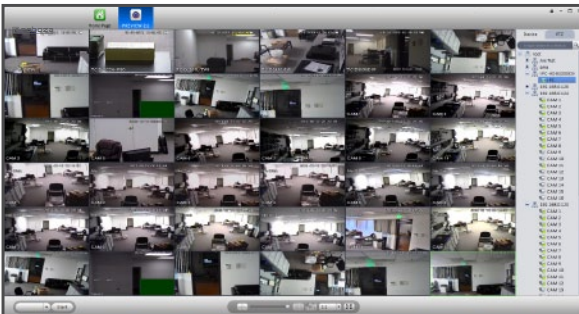
Alarm Management



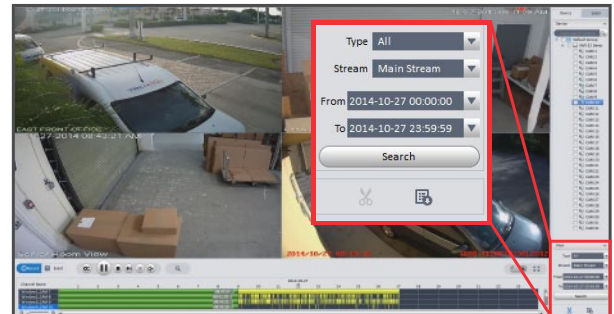
Event Reports



Video Wall



**Preview:** Display up to 64 cameras on the same screen

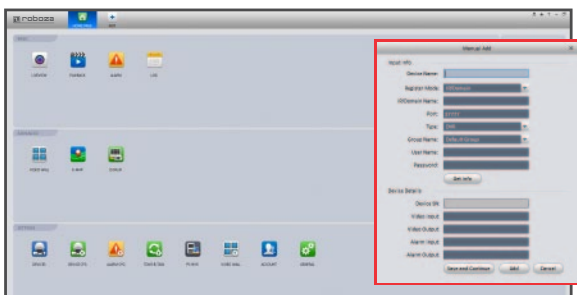


**Search:** View previous recordings and download to your PC

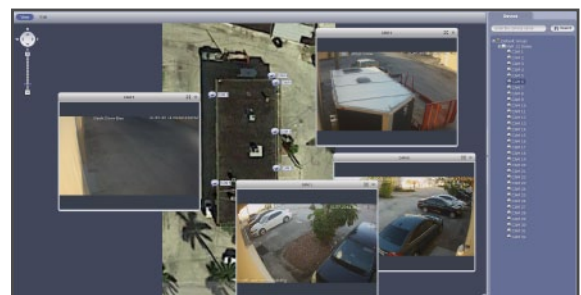
## FEATURES

- Supports up to 2000 channels, manages hundreds of devices
- Display up to 64 cameras on the same screen (x 4 preview windows as well)
- Supports NVRs, Video Servers, IP cameras, network keyboards, etc.
- Up to 36 channel synchronized playback
- Supports PTZ functions (zoom in and out), fisheye ePTZ using a mouse
- Reports events and their statistics
- Devices management throughout E-Map
- Alarm management
- Privileged account management
- Events and users operations log
- Provides access to device settings, configuration and other operations
- Supports video monitoring, local recording, taking snapshots, etc.
- Video Wall solution
- Fisheye dewarp support
- P2P supported
- Web-access via web-browser
- Centralized remote monitoring

SPECIFICATIONS		
Model	CMS (Windows version)	CMS (Mac version)
DEVICE TO USE		
Supported Devices	NVR, IP cameras, Network Video Servers, Video Wall Controller, Network Keyboards, etc.	
Managed Devices & Channels	Max. 256 devices, 2000 channels	
Device Management	Auto Find, Add, Delete, Device group, Reboot, Setup, Specify network segment	
Health Report	Device status, alarm info, HDD info	
LIVE MONITORING		
Video Display Split	1/4/6/8/9/16/25/36 or customized split for all versions, 64 is only available for Windows version	
Multiple View Screen	4	1
Features	Snapshot, Record, Audio, Talk, Instant playback, E-PTZ, Tour task	
PTZ Control	Directions, PTZ, Focus, Iris, Preset, Tour, Pattern; Joystick control	
Alarm output control	Support	
RECORDING & PLAYBACK		
PC-NVR	32 channel (Windows version)	Using Windows PC-NVR
Recording Mode	Manual, Schedule (Regular, MD, Alarm), Stop	
Video Source	Local PC (Manual or Alarm recording), device itself, PC-NVR	
Max Channels	36	
Duration	24h for one search	
Search Type	Certain time, Motion detection, Alarm, Smart search, Call ID	
Features	Snapshot, E-PTZ, Audio, Speed 1/8x~8x, Synchronized playback	
Picture Source	Local PC (manual snapshot), device itself	
Number of Export Tasks	Max. 10 at once	
Export	Export as .dav/.avi/.mp4/.asf	Export as .dav
ALARM SIGNAL MONITORING		
Features	Schedule alarms, setup actions, operate/memo alarm	
Alarm Type	External alarm, video loss, motion, tampering, disk full or error	
Actions	Trigger recording, PTZ movement, alarm, popup video	
E-MAP		
Number of Maps	Map group : Unlimited, Sub-Map, Layout : 64	
Supports Image	JPEG / BMP	
OTHER FEATURES		
PC-NVR	32 channels record	
Device Configuration	Network, Encode, PTZ, Image, event, Record, Disk, Account, Maintenance, Web	
Display	Remote control device's local splits	
Account	User and role management; privileges according to module & device	
Log	Client log, remote device log; operation log, system log, alarm log	
SYSTEM AND OS		
System requirement	CPU: 2 cores, 3.0GHZ or above;	
	Memory: 2G or above; HDD 80G or above	
Operating System	Window XP/Vista/7/8	OS 10.7 or above
Display resolution	1024 x 768 above(for advance)	



**Add Devices:** Setup and manage hundreds of devices



**E-map:** Identify your cameras based on pre-defined layout

\* CMS performance is highly dependent on a PC's capacity. The above recommended requirements are only for reference.