

# NVR16HD 16 Channel Network Video Recorder



NVR16HD is a professional network video recorder with 16 channel IP camera inputs supporting display resolution up to 1080p and recording up to 5MP. Features internal hard disk capacity up to 8 Terabytes. The NVR is compatible with various brand network cameras complied with ONVIF protocol

**roboza**  
PREMIUM CCTV



5MP



ONVIF

HDMI

HDMI, VGA



2 HDD bays



16 Channels

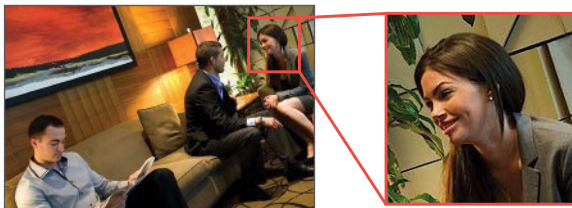


Remote Apps

## FEATURES

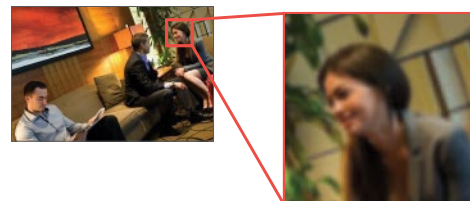
- Support up to 16 IP cameras
- Real-time view up to 1080p (full HD)
- Recording resolution up to 5.0 MegaPixel
- 16 channel synchronized playback
- H.264/MJPEG/MPEG4 compression format
- Support 200Mbps network bandwidth
- HDMI/VGA interface
- 2-way audio (G.711a)
- Alarm (4CH in/2CH out)
- Support 2 Internal Hard Disks upto 8TB capacity
- Backup via USB (2 ports) or network
- RS232, RS485
- Support IR remote control
- Support not only Roboza but other IP-CCTV brands such as Axis, Brickcom, Honeywell, Samsung, Sony, Vivotec and other cameras complied with ONVIF protocol
- ONVIF conformity
- Support web-viewer, CMS, Mobile viewing (iOS, Android, Windows)
- 12V DC

### NVR16HD + HD Cameras



1080p (1920\*1080) / [2 Million pixels]

### Common NVR + HD Cameras



720p (1280 \* 720) / [1 Million pixel]

## COMPATIBILITY



## SPECIFICATIONS

Model	NVR16HD
System	Embedded Linux real-time operation system (Web, Local GUI interface)
<b>VIDEO</b>	
IP Camera Input	16 channels
Audio	1CH input/1CH output (G.711a), RCA.
<b>DISPLAY</b>	
Interface	1 HDMI, 1 VGA
Resolution	1920 × 1080, 1280 × 1024, 1280 × 720, 1024 × 768
Display Split	1/4/8/9/16
OSD	Camera title, Time, Video loss, Camera lock, Motion detection, Recording
<b>RECORDING</b>	
Compression	H.264/MJPEG/MPEG4
Resolution	5MP(2560 × 1920)/3MP(2048 × 1536)/1080P(1920 × 1080)/720P(1280 × 720)/D1 (704 × 576/704 × 480)
Recording Rate	200Mbps
Bit Rate	48~ 8192kbps
Recording Mode	Manual, Schedule(Regular(Continuous), MD, Alarm), Stop
Recording Interval	1~120 min (default: 60 min), Pre-record: 1~30 sec, Post-record: 10~300 sec
<b>VIDEO DETECTION &amp; ALARM</b>	
Trigger Events	Recording, PTZ, Tour, Alarm, Video Push, Email, FTP, Buzzer & Screen tips
Video Detection	Motion Detection, MD Zones: 396(22 × 18), Video Loss & Camera Blank
Alarm Input	4 channel
Relay Output	2 channel
<b>PLAYBACK &amp; BACKUP</b>	
Synchronized Playback	1/4/9/16
Search Mode	Time/Date, Alarm, MD & Exact search (accurate to second), Smart search
Playback Functions	Play, Pause, Stop, Rewind, Fast play, Slow play, Next file, Previous file, Next camera, Previous camera, Full screen, Repeat, Shuffle, Backup selection, Digital zoom
Backup Mode	USB Device/Network/Internal SATA burner
<b>NETWORK</b>	
Ethernet	1 RJ-45 port (10/100/1000Mbps)
Network Function	HTTP, TCP/IP, IPv4/IPv6, UPNP, RTSP, UDP, SMTP, NTP, DHCP, DNS, IP Filter, PPPOE, DDNS, FTP, Alarm Server, IP Search
Max.User Access	128 users
Mobile Viewing	iOS, Android, Windows Phone
<b>STORAGE</b>	
Internal HDD	2 SATA ports, up to 8 Terabyte
<b>AUXILIARY INTERFACE</b>	
USB	1 Rear USB3.0 port, 1 Front USB2.0 port
RS232	1 port (for PC and Keyboard communication)
RS485	1 port for PTZ control
<b>GENERAL</b>	
Power Supply	12V DC / 4A
Power Consumption	<30W (without HDD)
Operating Temperature / Humidity	-10°C~+55°C (14°F~131°F) / 10%~90%RH / 86~106kpa
Dimension (W× D× H)	376×320×43mm (14.8 x 12.6 x 1.7")
Weight	2kg / 4.4lb (without HDD)

