

NVR8

8 Channel Network Video Recorder



The NVR8 is an HD 1080p mini network video recorder with support of up to 8 IP cameras. Records to 1 SATA HDD up to 1TB and it is compatible with various brand network cameras complied with ONVIF protocol.



5MP



ONVIF

HDMI

HDMI, VGA



8 Channels



Encoding

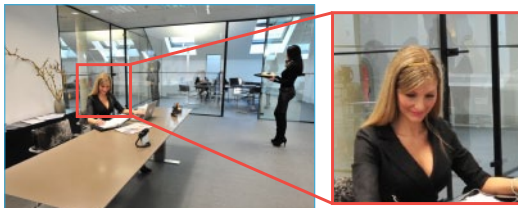


Remote Apps

FEATURES

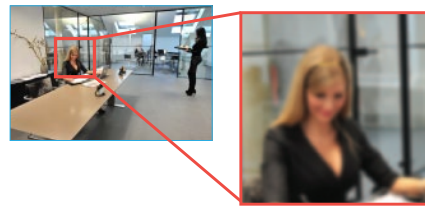
- Support up to 8 IP cameras
- Compact Mini design
- Real-time view up to 1080p (full HD)
- 1080P (2CH @ 30fps), 720P (4CH @ 30fps), D1 (8CH @ 30fps)
- 8 channel synchronized playback
- H.264/MJPEG compression format
- Support 56Mbps network bandwidth
- HDMI/VGA interface
- Support 1 x HDD up to 1TB
- Backup via USB (2 ports) or network
- Support not only Roboza but other IP-CCTV brands such as Axis, Brickcom, Honeywell, Samsung, Sony, Vivotec and other cameras complied with ONVIF protocol
- ONVIF conformity
- Supports web-viewer, CMS, Mobile viewing (iOS, Android, Windows)
- 5V DC/2A

NVR8 + HD Cameras



1080p (1920*1080) / [2 Million pixels]

Common NVR + HD Cameras



720p (1280 * 720) / [1 Million pixel]

COMPATIBILITY



SPECIFICATIONS

Model	NVR8
System	Embedded Linux real-time operation system (Web, Local GUI interface)
VIDEO	
IP Camera Input	8 channel
DISPLAY	
Interface	1 HDMI, 1 VGA
Resolution	1920 × 1080, 1280 × 1024, 1280 × 720, 1024 × 768
Display Split	1/4/8
OSD	Camera title, Time, Video loss, Camera lock, Motion detection, Recording
RECORDING	
Compression	H.264/MJPEG
Resolution	1080P(1920×1080)/720P(1280×720)/D1 (704×576/704×480) & etc.
Recording Rate	Max. 56 Mbps
Bit Rate	48~8192kbps
Record Mode	Manual, Schedule(Regular(Continuous), MD), Stop
Record Interval	1~120 min (default: 60 min), Pre-record: 1~30 sec, Post-record: 10~300 sec
VIDEO DETECTION	
Trigger Events	Recording, PTZ, Tour, Alarm, Video Push, Email, FTP, Buzzer & Screen tips
Video Detection	Motion Detection, MD Zones: 396(22× 18), Video Loss & Camera Blank
PLAYBACK & BACKUP	
Sync Playback	1/4/9 (Multiple channels playback: 8CH@D1 or 4CH@720P or 2CH@1080P)
Search Mode	Time/Date, MD & Exact search (accurate to second), Smart search
Playback Function	Play, Pause, Stop, Rewind, Fast play, Slow play, Next file, Previous file, Next camera, Previous camera, Full screen, Repeat, Shuffle, Backup selection, Digital zoom
Backup Mode	USB Device/Network/Internal SATA burner
NETWORK	
Ethernet	1 RJ-45 port (10/100Mbps)
Network Function	HTTP, TCP/IP, IPv4/IPv6, UPNP, RTSP, UDP, SMTP, NTP, DHCP, DNS, IP Filter, PPPOE, DDNS, FTP, IP Search, SNMP, P2P
Max.User Access	128users
Mobile Viewing	iOS, Android, Windows Phone
STORAGE	
Internal HDD	1 SATA port, up to 1 terabyte (2.5")
AUXILIARY INTERFACE	
USB	2 rear ports x USB2.0
GENERAL	
Power Supply	DC 5v / 2A
Power Consumption	< 10W (without HDD)
Operating Conditions	-10°C~+50°C/10%~90%RH/86~106kpa
Dimensions (W×D×H)	192x128x36mm (7.55x5x1.4")
Weight / Colour	0.36kg/0.79lb excluding HDD / Black (or White)

